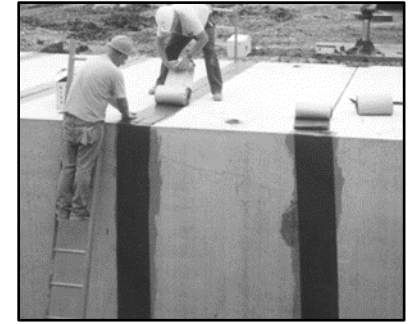


### Membrane Waterproofing and Exterior Joint Wrap for Precast Concrete Joints



#### Applications

For joints in: Box Culverts, Underground Concrete Vaults, Segmented Bridge Structures, Wastewater Structures and Arched Bridge Structures, Manholes. **Not intended for use in expansion joints or joints that move.**

#### Sealing Properties

- Chemically resistant butyl resin sealant laminated to a temperature resistant geotextile fabric.
- High strength materials provide excellent resistance to puncture, tear and abrasion.
- Provides a flexible seal which becomes a permanent part of the pavement structure when the tack coat and asphalt are applied over the ConWrap CS-213.
- Geotextile fabric absorbs asphalt tack coat at a rate of approximately 0.30 gallons per square yard.
- Application temperature range: 0°F to 120°F (-18°C to 49°C)
- Service temperature range: -50°F to 330°F (-45°C to 165°C)
- Will not shrink, harden or oxidize upon aging.
- Available in numerous standard sizes.
  - Standard thicknesses: 0.065" and 0.100"
  - Standard widths: 6", 12", and 24"

#### Physical Properties & Chemical Composition

Description	Spec	Required	CS-213
Color			Black
<b>Butyl Rubber Adhesive:</b>			
Thickness, in, min		0.030	0.060
Inert Material, %, min	C990	30 min	48.8
Volatiles, %, max	C990	2.0	1.2
Specific Gravity	C990	1.15-1.50	1.34
Penetration, cone, 77°F, 150 gm, 5 sec, min	D217	50-80 dmm	70 dmm
Hydrocarbon blend content, % by weight	D4 (mod)	50-70	51.2
Ductility, @77°F, min.	D113	5.0	12 cm
Flash point, C.O.C., °F, min.	C990	350°F	450°F

#### Installation Guidelines

The following procedures should be followed for optimum ConWrap performance.

- Clean the surface with a brush and remove any dirt, debris, flashing, or concrete high points, which could keep ConWrap CS-213 from adhering to the concrete.
- If necessary, a joint primer (i.e. CS-50 or CS-75) can be applied to improve adhesion. CS-50 is a solvent-based primer that can be applied days or weeks in advance. CS-75 is a water-based primer that dries tacky and must be applied at the time of the installation.
- When using a primer, allow the primer to dry before placing sealant.

The primer will normally be dry to the touch (CS-50) or tacky (CS-75) within 15-20 minutes.

- To apply ConWrap to a horizontal joint, begin by removing the release paper from the adhesive side and apply the ConWrap to the concrete. Continue around the joint by removing the release paper as the roll of ConWrap is unrolled. Press the wrap firmly by hand against the entire surface as it is applied to assure full contact.
- Where joining two sections, or where two ends meet together, provide an overlap of approximately 2" and firmly press the overlapping strip onto the end of the underlying strip to seal the joint.

Reference Installation Instructions for "ConWrap (Exterior Joint Wrap)" for more detailed instructions.

#### Limited Warranty

This information is presented in good faith, but we cannot anticipate all conditions under which this information and our products, or the products of other manufactures in combination with our products, may be used. We accept no responsibility for results obtained by the application of this information or the safety and suitability of our products, either alone or in combination with other products. Users are advised to make their own tests to determine the safety and suitability of each such product or product combinations for their own purposes. It is the **users' responsibility** to satisfy himself as to the suitability and completeness of such information for this own particular use. We sell this product without warranty, and buyers and users assume all responsibility and liability for loss or damage arising from the handling and use of this product, whether used alone or in combination with other products.