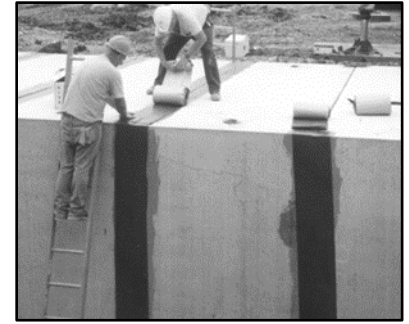


*Don't Just Seal It, ConSeal It!*

### Membrane Waterproofing and Exterior Joint Wrap for Precast Concrete Joints – Meets ASTM C877



#### Applications

For joints in: Box Culverts, Underground Concrete Vaults, Segmented Bridge Structures, Wastewater Structures and Arched Bridge Structures, Manholes. **Not intended for use in expansion joints or joints that move.**

#### Sealing Properties

- Excellent resistance to puncture, tear and abrasions.
- Aggressively bonds to concrete and metal structures.
- Provides a permanent flexible water and soil barrier.
- Will not shrink, harden or oxidize upon aging.
- Available in numerous standard sizes.
  - Standard thicknesses: 0.065" and 0.100"
  - Standard widths: 4", 6", 8", 9", 12", 24", 36" and 48"
- Custom widths and lengths available upon request.
- No priming normally necessary. When confronted with difficult installation conditions, such as wet concrete or temperatures below 40°F (4°C), priming the concrete will improve the bonding action. Consult Concrete Sealants for the proper primer to meet your application.
- Meets ASTM C877 Type III, Type A Specification

#### Physical Properties & Chemical Composition

Description	Spec	Required	CS-212
Color			Black
<b>Backing Band:</b>			
Thickness, in.		0.004	0.004
Tensile Strength, min, psi, mach. direction	D882	4,000	4,158
Elongation at break, min, %, mach. direction	D882	100	107
Tear resistance, min, psi, mach. Direction	D624	1500	1508
Water absorption, max, %	D570	0.01	0.01
<b>Butyl Rubber Adhesive:</b>			
Thickness, in, min		0.030	0.060
Ash-inert Matter, %	D1278	30-50	35-45
Volatiles, %	C681	0.1-2.0	0.8-1.2
Specific Gravity	D792	1.15-1.50	1.20-1.30
Adhesion, lb/in	D903		4.2
Penetration at 77°F	D217	50-100 dmm	65-75 dmm
Hydrocarbon blend content, % by weight	D4	50-70	52 min
Ductility, @77°F, min.	D113	5.0	12 cm
Softening point, °F, min	D36	320°F	335°F

#### Installation Guidelines

The following procedures should be followed for optimum ConWrap performance.

- Clean the surface with a brush and remove any dirt, debris, flashing, or concrete high points, which could keep ConWrap CS-213 from adhering to the concrete.
- If necessary, a joint primer (i.e. CS-50 or CS-75) can be applied to improve adhesion. CS-50 is a solvent-based primer that can be applied days or weeks in advance. CS-75 is a water-based primer that dries tacky and must be applied at the time of the installation.
- When using a primer, allow the primer to dry before placing sealant.
- The primer will normally be dry to the touch (CS-50) or tacky (CS-75) within 15-20 minutes.
- To apply ConWrap to a horizontal joint, begin by removing the release paper from the adhesive side and apply the ConWrap to the concrete. Continue around the joint by removing the release paper as the roll of ConWrap is unrolled. Press the wrap firmly by hand against the entire surface as it is applied to assure full contact.
- Where joining two sections, or where two ends meet together, provide an overlap of approximately 2" and firmly press the overlapping strip onto the end of the underlying strip to seal the joint.

Reference Installation Instructions for "ConWrap (Exterior Joint Wrap)" for more detailed instructions.

#### Limited Warranty

This information is presented in good faith, but we cannot anticipate all conditions under which this information and our products, or the products of other manufactures in combination with our products, may be used. We accept no responsibility for results obtained by the application of this information or the safety and suitability of our products, either alone or in combination with other products. Users are advised to make their own tests to determine the safety and suitability of each such product or product combinations for their own purposes. It is the users' responsibility to satisfy himself as to the suitability and completeness of such information for this own particular use. We sell this product without warranty, and buyers and users assume all responsibility and liability for loss or damage arising from the handling and use of this product, whether used alone or in combination with other products.