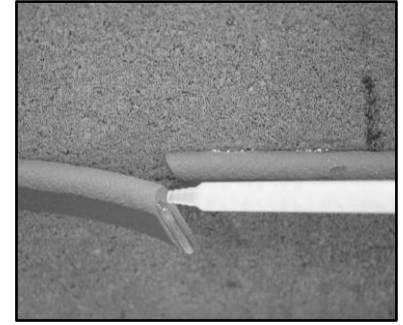


Welding Adhesive Primer for CS-5000

Applications

For use on concrete, metal or plastic surfaces; CS-1400 Welding Adhesive Primer is a structural bonding adhesive primer for splicing CS-5000 and other ConSeal waterstops.



Physical Properties

Description

Color:	Natural
Reaction Time:	30-45 Seconds
Bonding Time:	45-75 Seconds
Full Cure Time:	90-120 Minutes
Shear Strength:	1010 psi
Hardness:	118 Rockwell
Application Temperature:	30°F to 120°F (-1°C to 48°C)
Service Temperature:	-33°F to 212°F (-36°C to 100°C)
Storage Temperature:	50°F to 90°F (10°C to 32°C)
Shelf Life:	12 Months from Manufacture Date

Installation

Surface Preparation

Waterstop Splice: Surface must be dry, free of loose debris, and contaminants before adhering the splices together.

Application Instructions

Splices: Apply a 1/8"-1/4" (3-6mm) bead of CS-1400 to adhere splices of CS-5000 waterstop. When using CS-1400 as a primer for CS-5000, assemble splices before the adhesive starts curing and apply steady pressure over the gluing area during the "bonding time".

Limited Warranty

This information is presented in good faith, but we cannot anticipate all conditions under which this information and our products, or the products of other manufactures in combination with our products, may be used. We accept no responsibility for results obtained by the application of this information or the safety and suitability of our products, either alone or in combination with other products. Users are advised to make their own tests to determine the safety and suitability of each such product or product combinations for their own purposes. It is the **users' responsibility** to satisfy himself as to the suitability and completeness of such information for this own particular use. We sell this product without warranty, and buyers and users assume all responsibility and liability for loss or damage arising from the handling and use of this product, whether used alone or in combination with other products.