

ConSeal™ CS-1800

Solvent Free,
Waterproofing Membrane



Solvent Free Waterproofing Membrane for Most Construction Materials

Applications

For use on concrete structures, including: Foundations, Box Culverts, Manhole Risers, Lift Stations, Septic Tanks, Utility Vaults, Burial Vaults, Vertical Panel Structures, Bunker Silos, Concrete Structure Patching, and Grouting. Additional uses include some Metal, Fiberglass, and Plastic applications. **Not intended for use in expansion joints or joints that move.**

Physical Properties & Features

| Property | Typical Value | Test Method |
|---|---|-------------|
| Cure System | Hybrid, Moisture Cure | |
| Coverage Rate | 50 ft ² /gallon per 30 mils coat | |
| Cure Rate (77°F at 50% Relative Humidity) | 1/8" per 24 hours | |
| Movement Capability | ±25% | ASTM C-719 |
| Tensile Strength | 170 psi | ASTM D-412 |
| Elongation | 350% | ASTM D-412 |
| Adhesion to Concrete (Clean, Dry) | 226 psi | ASTM D-4541 |
| Shore A, Hardness | 29 | ASTM C-661 |
| Solids Content (by Weight) | 100% | ASTM D-1644 |
| VOC Content | <31 grams/liter | ASTM D-2369 |
| Shrinkage | No measurable shrinkage after 14 days | |
| Service Temperature | -75°F to 225°F (-60°C to 107°C), continuous service | |
| Application Temperature | 34°F to 130°F (1°C to 55°C) | |

Features

- Resistant to hydrostatic pressures in excess of 60psi
- Finish: Black, Semi-Gloss, Rubber
- Solvent free, 100% solids.
- High build, self-leveling membrane. Will not shrink or crack.
- Cold applied, single component, elastic waterproof membrane.
- Thermal shock resistant, elastomeric rubber membrane.
- Positive and negative waterproofing capabilities.
- Easy application methods: Brush, Roller, Trowel, or Squeegee
- Tack free in less than 90 minutes. Paintable.
- Resistant to most chemicals. See Chemical Resistance Chart for details.
- Can be used in confined spaces without respiratory protection. See Safety Data Sheet for details.
- Superior adhesion to most construction materials, including:
Concrete, Metal, Fiberglass, Plastic, PVC, and Wood.
Contact Concrete Sealants, Inc. for additional application possibilities.

Green Standards

NAHB Model Green Home Building Guidelines:
5 Global Impact Points
EPA Method 24 (tested at 240°F & includes water)

Regulatory Compliance

Conforms to OTC Rule for Sealants & Caulks
Meets requirements for California Regulations:
CARB, BAAQMD, and SCAQMD
Conforms to California Proposition 65
Conforms to USDA Requirements for Non-Food Contact

Don't Just Seal It, ConSeal It!

© 2013 Concrete Sealants, Inc.

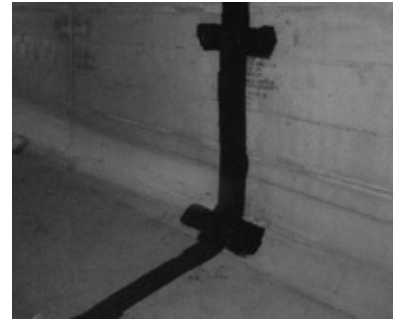
Concrete Sealants, Inc. 9325 State Route 201 ■ Tipp City, OH 45371 ■ Toll Free 800.332.7325

P. 937.845.8776 F. 937.845.3587 ■ www.conseal.com



ConSeal™ CS-1800

Solvent Free,
Waterproofing Membrane



Solvent Free Waterproofing Membrane for Most Construction Materials

Installation & Storage

Surface Preparation

Concrete: Surface should be free of form release, curing compounds, sealers, loose debris or other contaminants. Sand blasting, power washing, wire brushing, or other appropriate cleaning techniques can be utilized. Dry all visible and standing water prior to applying CS-1800. **Make sure the surface is free of frost.**

Metal: Surface should be free of loose debris or other contaminants. Sand blasting, power washing, wire brushing, or other appropriate cleaning techniques can be utilized. Dry all visible and standing water prior to applying CS-1800.

Fiberglass/Plastic: Surface should be free of form release, loose debris or other contaminants. Sand blasting, power washing, wire brushing, or other appropriate cleaning techniques can be utilized. Dry all visible and standing water prior to applying CS-1800.

DO NOT USE petroleum solvents such as Mineral Spirits or Xylene for surface preparation.

Priming

In most instances, CS-1800 will not require a primer. However, certain applications or substrates may require a primer to ensure a long lasting bond and weatherproof seal. It is the applicator's responsibility to determine the need for a primer.

NOTE: Do not prepare any concrete or metal surfaces with asphalt-based materials. Asphalt primers are bond breakers and will soften cured CS-1800. Residual asphalt or old, cured coal tar pitch-coated surfaces are fine. It is the applicator's responsibility to test a sample area for compatibility.

Application Instructions

Maintain CS-1800 at room temperature (~70°F) before applying to ensure easy application. Utilizing a brush, roller, trowel, or squeegee; apply CS-1800 onto the prepared surface at the desired millage. Spread rate: 50 sq. ft./gal. per 30 mils coat (nominal). If a second coat is necessary, apply as soon as possible. When recoating ensure the skin layer is clean, dry, and has met curing requirements.

Clean-Up

Wet sealant can be removed using a solvent such as alcohol.

KEEP OUT OF REACH OF CHILDREN

Packaging & Storage

2-gallon pails – 60 pails per pallet

Shelf Life: 12 months from manufacture date when stored in cool, dry area. Elevated temperatures (>100°F) may reduce shelf life.

Reuse Shelf Life: 6 month maximum (less manufacture shelf life)

Remove top skin layer. Product consistency may thicken.

Approximate Curing Schedule

| Surface Temp. & 50% Relative Humidity | Dry to Touch | Minimum Recoat Time | Maximum Recoat Time | Service Ready |
|---------------------------------------|--------------|---------------------|---------------------|---------------|
| 50°F (10°C) | 90 Minutes | 5 Hours | 14 Days | 72 Hours |
| 75°F (24°C) | 90 Minutes | 4 Hours | 14 Days | 72 Hours |
| 90°F (32°C) | 90 Minutes | 4 Hours | 14 Days | 72 Hours |

*Curing Schedule based on 40 mils applied to clean, dry concrete.

**Consider strength of skin layer prior to recoating.

Limited Warranty

This information is presented in good faith, but we cannot anticipate all conditions under which this information and our products, or the products of other manufactures in combination with our products, may be used. We accept no responsibility for results obtained by the application of this information or the safety and suitability of our products, either alone or in combination with other products. Users are advised to make their own tests to determine the safety and suitability of each such product or product combinations for their own purposes. It is the **users' responsibility** to satisfy himself as to the suitability and completeness of such information for this own particular use. We sell this product without warranty, and buyers and users assume all responsibility and liability for loss or damage arising from the handling and use of this product, whether used alone or in combination with other products.

Don't Just Seal It, ConSeal It!

© 2013 Concrete Sealants, Inc.

Concrete Sealants, Inc. 9325 State Route 201 ■ Tipp City, OH 45371 ■ Toll Free 800.332.7325

P. 937.845.8776 F. 937.845.3587 ■ www.conseal.com

